



# grace

## LUTHERAN CHURCH

belong · believe · become

210 W. Park Row Dr.  
Arlington, TX 76010  
817.274.1626  
online @ grace.lc

Newsletter  
FEBRUARY 2022

Pastor  
Doug Widger  
Lead Shepherd

Pastor Steve Roth  
Community Care

Dr. Serena Pace  
DCE - Director of  
Ministries

Jennifer Chavez  
Director of  
Early Education

Rev. Dr. Russell  
Hildebrandt  
Pastor Emeritus

Rev. Dr. David  
Joeckel  
Pastor Emeritus



Inside this issue:

Email Phishing Alert	1
Women's Renewal	1
Thank you notes	1
Family Ministry News	2
MOTM Update	2
Ongoing Groups Updates	3
Loving Liberia	3
Thrivent	4
Faith Lutheran Presentation	4
Your Elders	4
Pushpay	4
Email jdelcristo@grace.lc	5
New Members	5
B'days/Anniversaries	5
Puzzle	6

## Email Phishing Alert

We have become aware that some of our congregation members have received phishing emails that appear to be from Pastor Doug Widger. If you get an email that says it's Pastor Widger or any other church staff/leadership, and it's saying they're out somewhere/in a meeting, need help and want a reply to the email, you should mark it as junk or spam or just delete it. If you are ever unsure, you can contact our church office to find out by calling 817-274-1626 or emailing [churchoffice@grace.lc](mailto:churchoffice@grace.lc)



## Women's Renewal Retreat - there's still time to register!

Join us as we travel to Camp Lone Star in La Grange, TX for a time set aside for women to reflect on Christ and His Word, be in fellowship with other sisters in Christ across the generations, and spend time in His creation. Enjoy opportunities for hiking, archery, tomahawk throwing, crafts, canoeing, star gazing, a prayer walk around the lake, campfire devotions, quiet meditation outside, and conquering the climbing tower.

We have two groups leaving on Friday, February 25th (one in the morning, another in the evening), and we will return on Sunday the 27th. Contact Serena Pace for more information or to register!

## Thank you notes

Dear Grace Family,

Thank you so very much for the wonderful basket of goodies you gave to me at Christmas. Please know that it provided some much needed sunshine. I appreciate all the things that are done for me. I feel truly blessed to be a member of the Grace Family.

May God Bless you for your caring ways.

In Christian Love,

*Carol Hall*

Thank you Grace. We enjoyed the filled 'basket' our Elder brought over to us. We enjoyed his visit also. Thank you ladies, who put together the 'baskets.' May God bless all in 2022.

*Charles and Gerry Sparks*

# FAMILY MINISTRY NEWS

## SUNDAY MORNINGS at 9:45 am (between early and late services)

Grace Kids (Grades 1-3 and Preteens Grades 4-6) Meet in classrooms in the preschool hall.

JR. High Youth (Grades 7-8) meet in Meeting Room 4 for Deep End Confirmation.

High School Bible Study (Grades 9-12) Youth meet in the Youth Shed.

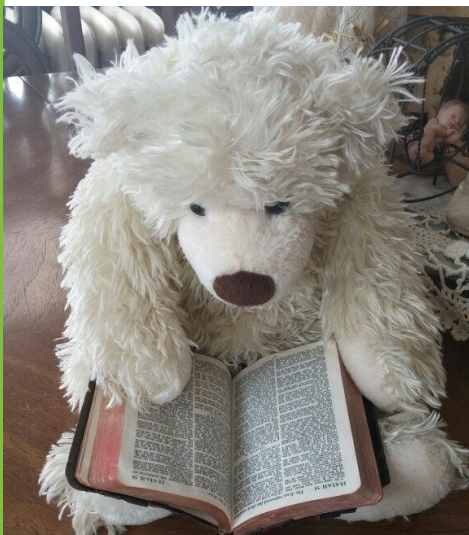
Biblical Parenting Sunday School (For parents, grandparents, & guardians of preschoolers through high school seniors) meets in the Library.

## Grace Kids Sunday School

Are you interested in joining the Grace Kids Ministry Team? We are looking for assistants or subs to join our AWESOME team of people who are passing on the faith to the next generation. Contact Serena at [space@grace.lc](mailto:space@grace.lc) or 817-274-1626, x1002 for more information.



**February 27, 2022:** We're going to Main Event in Grand Prairie! In the afternoon, \$10 per participant. Watch for more details on food and activities, and make sure you wear socks! Contact Anthony Lee for questions and to RSVP you and your friend.



### Adopt a Bible Buddy for Lent!

Watch for Bible Buddy Adoption Days and pick the one you want to adopt. Bible buddies do not eat food. They are fed by the Word of God. Read to them and memorize special Scripture. Mom and Dad can help out, too! Have your parents sign off on reading and Bible Memory. We will celebrate all the Bible reading and memorization you have done after Easter with a Nerf & Bounce party!

It's a super day with Pancakes & PJ's!



**Sunday, Feb. 13, 9:45 AM,  
FLC Kitchen**

## Save the Date for The Easter Egg Hunt!

Sunday, April 17, 9:45 AM on the Back Field

**Candy, Trinkets & Plastic Eggs NOW being accepted!**

Let Serena know if you want to volunteer in: Set Up/Clean Up Crew, Age-Group Hosts, Egg Stuffers, Goody Bag Stuffers & More!



## Mission of the Month: Update

The Engage Community Team thanks our congregation for the generous support they offered to this special ministry in 2021. The Team wanted to experiment with a monthly mission for one year to see how God would lead. Indeed He did! New partnerships were gained that seem right to focus on even more in 2022. The team will continue to evaluate the possibility of continuing with a Mission of the Month. We are most excited about pouring into GLEE, Embrace Grace, The Perry Geevon Smith Schools in Liberia and exploring further the possibility of engaging our community through Hispanic Ministry. We value the input and ideas of our congregation. Please do share your thoughts. We are seeing evidence of God at work in our church. For that, we give thanks!

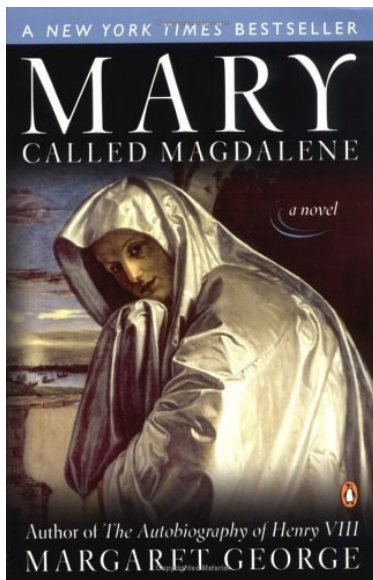
NEXT Engage Community Team Meeting 2/14, 10 AM – Tentatively in MR2

# Ongoing Groups Updates

Information on all the groups can always be found on the church website at [grace.lc/get-connected](http://grace.lc/get-connected)

## Book Club

This month we'll be reading the historical fiction *Mary Called Magdalene* by Margaret George. Meet with us to discuss on February 16th at 2 pm in the church library!



## Preschool Families

We're having a Family Game Day on Saturday, February 26th in the Gym! For families with kids 5 and under (and their siblings!). We meet every 4th weekend of the month for a family fellowship event, contact Katie Lee for more information at [klee@grace.lc](mailto:klee@grace.lc)



## Bible Journaling

We are resuming meeting this month starting Saturday, February 5th at 10 am. We meet on Zoom and document our walk with God through drawing, journaling, and art. Come join us sometime!

## Grace Seniors

We had a lovely first meeting back and decided to plan for more of a fellowship-based time for now, and possibly bring speakers in when we have more numbers. We will continue meeting once a month on the 2nd Thursdays at noon.

**grace**Seniors

## Loving Liberia Update



Perry's schools are being advertised in Monrovia so more children will know about his schools and parents will make an effort to send their children.

In January we had a zoom meeting with the National Secretariat (Board for Perry's schools in Liberia) and had a frank discussion of what their needs are. The teachers are working hard and they are asking for a raise to combat inflation and get closer to the recommended pay structure of teacher salaries in Monrovia.

Thank you to all who pray for Perry's schools and who sponsored a child. We are so grateful for your partnership in "Learning for a Better Tomorrow."

May the Lord grant you his grace and may He hold you in His arms with love and compassion.

Blessings,

*Pastor Hildebrandt*



## Thrivent Update

Thanks to everyone who came to the January Thrivent luncheon meeting.

1 - If you haven't already, be sure to go online or call Thrivent (800

thrivent) to direct your Choice Dollars to get that free Thrivent money directed to Grace. This is Thrivent money and does not come out of your account.

2 - And thanks for signing up for Action Teams. Every Thrivent member gets 1 or 2 \$250 opportunities every year. Again, this is Thrivent's money and does not come out of your account. I'll be in touch when it's time to get that request sent in to Thrivent.

If you see a need or opportunity to serve in our church community or another community, run it by me. There's probably a way to get money to serve.

And please remember, the more you and I can work together to coordinate action teams, the more we will be able to access.

3 - There is still time to bring your canned soup for the nation-wide program SOUPER BOWL of Caring to tackle hunger in our community.

I can't wait to see how much soup will be delivered to Arlington Charities!

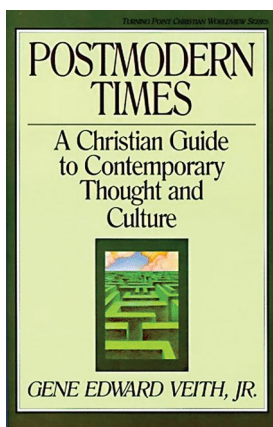
Thanks all and blessings as we make a difference together.

~Chris Owens, Thrivent Action Team Coordinator

# thrivent

## Faith Lutheran Presentation

Faith Lutheran Church and School in Plano, Texas will host a presentation by renowned author Dr. Gene Edward Veith on Thursday, February 3 at 7 p.m. with a reception to follow. Dr. Veith will discuss his book "Postmodern Times: A Christian Guide to Contemporary Thought and Culture." All are welcome! Please join us.



## Pushpay Instruction

1. Use your cell phone text messaging feature.
2. Type (833)630-9900 in the send to line
3. Type GRACELC in the message line.
4. Press to send message.  
*Almost immediately you will receive a message back thanking you for your generosity.*
5. Click the link shown in the message.
6. This takes you to the page where you will see our church logo.
7. You have the option to make a gift to the church's ministries.
8. You can insert the dollar amount of the gift.
9. You can choose the frequency of the gift (one-time gift or recurring gifts).
10. Choose the fund type (tithes, etc.).
11. Click Next.
12. You will be able to confirm the details you just chose, then add your credit card or bank account information, and it can be stored for you or not, as you desire.
13. Check the box to authorize the transaction.
14. Press GIVE, and you are done.



## ELDERS & THEIR ASSIGNED MEMBERS

Ernie Owens	A-B
Hank Jacobs	C-E
David Swille	F-H
Mike Kennedy	I-L
Mike Curtis	M-O
Ernie Owens	P-R
Joe Masterson	S
Jim Schmidt	T-Z

Head Elder:  
Joe Masterson

## Your Elders Are Here for You

If there is any way we can assist you with any spiritual needs or physical concerns do not hesitate to contact your elder. If you need their contact information, please request it by calling the church at 817-274-1626 or email: [jdelcristo@grace.lc](mailto:jdelcristo@grace.lc).

New to Grace? Reference the adjacent list. If your last name begins with "M" for example, Mike Curtis would be your assigned elder.

*Joseph C. Masterson*



2/1 Ceara Barber	2/10 William Richmond
2/1 Janet Leppert	2/10 Zoey Barrett
2/1 Ty Cunningham	2/11 Joann Boyle
2/2 Hosny Gad	2/12 Jim Dupstadt
2/2 Rylan Morris	2/13 Thomas Wagoner
2/3 James Kempf	2/14 Elise Morris
2/3 Mary Schlotte	2/14 Justin Taylor
2/4 Sharese Dickerson	2/16 A.J. Jones
2/5 Ally Franklin	2/16 Libby Burgdorf
2/5 Bill Murrell	2/16 Joan Brooke
2/5 Russell Hildebrandt	2/16 Lou Ann Kersten
2/7 Janet Baetz	2/16 Steve Roth
2/8 Ann Bassett	2/16 Zoey Sessums
2/8 Mark Sterling	2/17 Rebecca Reed
2/8 Miguel Nieves	2/18 Ashley Hall
2/8 Pat Coomes	2/18 Deryl Surratt
2/8 Rachel Schmidt	2/19 Nikki Patton
2/8 Ryan Sterling	2/21 Nancy Grieser
2/8 Walter Baumann	2/22 Dean Mickelson
2/10 Francis Oshinowo	2/22 Esmeralda Enriquez
2/10 Phyllis Slotter	2/23 Kennedy Schmidt
	2/23 Nathan Horton
	2/24 Susan White
	2/24 Jenna Del Cristo
	2/25 Beverly Gilbert
	2/25 Dara Cunningham
	2/25 Erik Rubel
	2/26 Lisa Woolston
	2/27 Kenneth Sterling
	2/28 Sarah Joeckel



2/10 Tommy & Elizabeth Ott  
 2/12 James & Olena Gerhardt  
 2/14 Ernie & Chris Owens  
 2/14 Larry & Darla Creel

**Call the church office or  
 e-mail [jdelcristo@grace.lc](mailto:jdelcristo@grace.lc) if  
 you want to:**

- ◊ Receive a copy of *Portals of Prayer* mailed to your home.
- ◊ Be added to the group email list that receives prayer requests.
- ◊ Submit updated address and contact information.
- ◊ Receive a current Church Directory as an active Grace member.
- ◊ Submit and/or update a prayer request.

## New Members in Our Family of Faith

**Allison Bahe** moved here from Minnesota, and quickly got involved with Embrace Grace. You may have heard her speak a few Sundays ago on the impact of this ministry! She now works as a Behavior Technician for children with autism, and is studying to take her MCAT.

**Colin Toth** has been attending our church since he moved to Texas to get his master's degree at UTA, and is an official member now that he has settled into the area more with a full-time job. He also served on our staff for a time using his photography, video, and graphics skills.

**Young Son** and **Rachel Harlass** were most recently members of "The Vine," an outreach of the LC-MS begun in Grapevine several years ago. Young attended Concordia University in St. Paul, Minnesota, and they both play in our contemporary praise band.

**Janet Middlebrooks** was a member at Grace beginning in 1980. After several years her family moved to east Texas. She returned to Grace where her children were baptized and her youngest son was confirmed. She is glad to be back "home" at Grace.

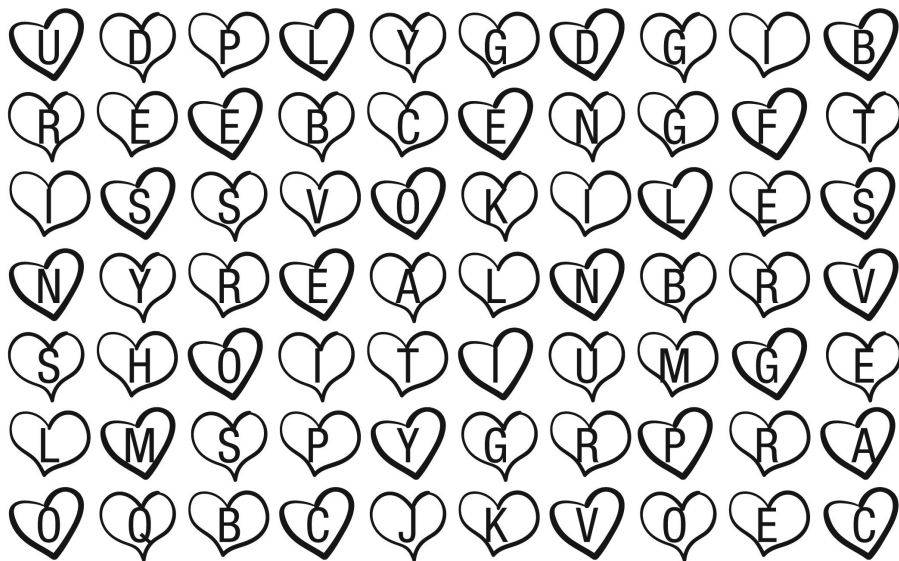
**Landon & Dori Schkade** have served in ministry all over the Americas since 1984, including Panama, St. Louis, the Northwest area, Boston, and Texas. They have 2 children, Susana and John, and 3 grandchildren (one of which was baptized here last October!).



# The heart of a friend

Big-hearted friendliness comes from generously serving others.

*Directions: Start with the first D and move according to the arrows beneath the blanks. Then fill in the letters to complete 1 Peter 4:8-10.*



Above all, love each other   D                 , because love  
                  over a multitude of            . Offer  
                              to one another without  
                             . Each of you should use whatever  
                              you have received to             others, as faithful  
                              stewards of God's             in its various forms.

1 PETER 4:8-10, NIV

Answer: deeply, covers, sins, hospitality, grumbling, gift, serve, grace