



Pastor Doug Widger (Lead Shepherd) | Pastor Steve Roth (Community Care)  
Dr. Serena Pace (DCE - Director of Ministries) | Mrs. Laura Scott (Director of Early Education)

## Rededication Service – Sunday, May 19th @ 10:00 AM

### Inside this issue:

Rededication Service	1
New Bible Class w/ Pastor Widger	1
New Sermon Series	1
Family Ministry News	2
GraceKids Game Night	3
Grace Lutheran Early Education (GLEE) News	3
Embrace Grace	4
Women's Ministry	4
Grace Seniors	4
Hispanic Ministry	5
Telling The Generations Update	6
Loving Liberia Updates	6
Texas District Grant	6
Memorials & Honorariums	7
2023 Braille Ministry Accomplishments	7
PushPay Instructions	8
Community Resources	8
Book Club	8
Holy Smokers	9
The Chosen & Chat	9
Soccer Camp 2024	10
Eclipse Donation Request	10
New Vine Music School	10
Contact Us	10
Bdays/Anniversaries	11
Special Dates	11
Your Elders	11
Spring Word Search	12
The Chosen TICKET	13

Please note the special service time. Consider inviting a friend to join you that day as we will have a special service and lots of fellowship opportunities following the service, highlighted by the In-n-Out food truck (semi-trailer). **Casual dress is encouraged** so we can engage in post-service activities. Please consider bringing a picnic blanket, lawn chairs and outdoor games. There will be tables and chairs set up in the Gym. *Please bring a dessert to share to the Gym ahead of service time.*



## Pastor Widger's Bible Class - The Gospel of John

The purpose of John's gospel is clearly seen in John 20:31, where he states, "But these are written that you may believe that Jesus is the Messiah, the Son of God, and that by believing you may have life in his name." Through our study of this unique Gospel, we too will have life in his name. Come and be a part of this journey, each Sunday @ 10:45AM, in MR 2— **BEGINNING MAY 5.**

## New Sermon Series Coming THIS JUNE!

### Soul CARE: How To Look Out For Yourself and Others!

This four-part series in June will help you tend to your own spiritual journey, while also causing you to think about investing in the soul care of the people around you. Please make a point to join us each week as we grow in grace together.



# FAMILY MINISTRY NEWS

## SUNDAY MORNING BIBLE STUDIES

10:45—11:45 a.m.

(Babies/Toddlers) Preschool Wing  
(Preschool 3's—Kinder & Grades 1-5)  
Preschool Wing Classrooms  
(Grades 6-8) MR 4 (Top Left)  
(Grades 9-12 ) Youth Shed  
(Biblical Parenting) Library

GROUP  
**WEEK OF HOPE**  
COMMUNITY SERVICE

**Influencer**  
grace Youth



JUNE 16th-21st, \$300, Grades 6-12  
WEEK OF HOPE—AUSTIN, TX

### Payment Schedule

May 15th - (\$300 NOW DUE TOTAL)

**Be a Week of Hope Community Partner!**  
Here's what we need!

- 6 ft by 4 ft fleece fabrics (to make blankets for local hospitals or nursing homes)
- Nonperishable cookie items (to make cookies for local first responders)
- Backpacks and school supplies (for local families)
- Pens, pencils, folders, notebooks
- Care-package items (for local homeless shelters): Soap, toothbrushes, toothpaste, deodorant, comb or small brush, nonperishable snacks, socks
- Toys, games and activities for children 1 - 12 y/o. Some suggested items: Chalk, puzzles, floor puzzles, Basketballs/Soccer balls/Footballs or outdoor activities, bubbles, science kits, tactile/developmental toys, etc.

**PLEASE BRING TO SERENA'S OFFICE.**



## Weekend Vacation Bible Camp '24

-Friday, July 12, 6:15PM-8:30PM | Rockin' Wrap Up & Snacks  
-Saturday, July 13, 9:00AM-11:30AM | Rockin' Wrap Up  
11:30AM-1:00PM | Family Pizza Lunch

Join the unforgettable and completely FREE camp at Grace Lutheran Church as we embark on an Outback adventure! Open to 1st-6th grade students (Fall '24). All volunteers are safety trained and background checked. Registration is open for participants and volunteers until July 5th at [vbs.grace.lc](https://vbs.grace.lc) or in person. Experience a thrilling mix of music, games, rock-solid Bible adventures, service projects, inflatables, and more!

210 W. Park Row Dr., Arlington 76010  
817-274-1626; [space@grace.lc](mailto:space@grace.lc); [www.grace.lc](http://www.grace.lc)

**NOW IS THE TIME** to ramp up for this exciting weekend adventure (July 12th & 13th)! Volunteers are needed to serve in a variety of roles! Can't volunteer that weekend? Partner with us in prayer!

**REGISTRATION IS OPEN** for PARTICIPANTS entering 1st—6th grades and service-hearted VOLUNTEERS!

Childcare for volunteers is provided.

Contact Serena for information ([space@grace.lc](mailto:space@grace.lc)).



FRIDAY, MAY 17th  
6-8PM



OLYMPIC—STYLE  
GAME NIGHT  
WITH FOOD AND A  
DEVOTION  
FOR PRE-K 5  
THROUGH GRADE  
5 CHILDREN.



## Popsicles On The Playground

THURSDAY NIGHTS  
6PM-7PM



### POPSICLES ON THE PLAYGROUND

Calling all kids! Join us for a time filled with fun and faith. Let's play, learn, and grow together in God's love! All children must be accompanied by parent.

**WANT TO VOLUNTEER?**

Email Laura Scott (GLEE Director)

JOIN GLEE FOR:

Donuts With Grown Ups



FRIDAY, MAY 10TH  
7:00AM TO 8:00AM



glee  
GRACE LUTHERAN  
EARLY EDUCATION

## FALL 2024 PRESCHOOL ENROLLMENT

Our experienced teachers and engaging curriculums offer a Faith-based preschool education that benefits each student as a whole person.

### PROGRAM FEATURES :

- ✓ One In Christ curriculum
- ✓ FROG Street curriculum
- ✓ Age appropriate development activities

ENROLL TODAY

817-275-5131

[WWW.GRACE.LC/WELCOME](http://WWW.GRACE.LC/WELCOME)



graceSeniors

May 9th, 12PM

Fireside — Family Life Center

Bring your favorite lunch salads and/or desserts to share! Rolls will be provided.

Devotion: Vickie

Speak with Serena about serving as host.

Which friend will you bring?

Serena: 817-274-1626, x1002;  
space@grace.lc



OUT FOR  
*Lunch*

May 26th, 12PM

Meet at TWISTED ROOT  
for fellowship after church.

310 E. Abram St, Ste 100  
Arlington, TX 76010  
(817) 201-9669



**THANK YOU**, Church, for your support of our BLOOMS and their sweet babies! What a special day it was as we celebrated our Embrace Grace moms and babies and showered God's love on them.

Sisters In Christ  
WOMEN'S MINISTRY

Grace Women's Ministry

MAY 11th & JUNE 8th

9:30—11:30 AM

Gym, Family Life Center

Gather with women of Grace and the community for a time of connection and spiritual growth through a devotion, prayer, discussion, and a continental breakfast.

Bring: Bible, pen, and journal

Topic: Women in the Bible

RSVP to Serena by May 8th at noon.  
Sign up before or after Sunday worship service on the clipboard or online..

Speak with Serena to volunteer!

817-274-1626, X 1002; space@grace.lc

TUESDAY, SEPT. 14th

WOMEN'S EVENT

9AM—3:30 PM Family Life Center

SAVE THE DATES!



# HISPANIC MINISTRY NEWS

## ESL Classes Ministry

**DID YOU KNOW, OUR ESL YEAR COURSE IS ABOUT TO END?**

JOIN US at our ESL graduation on May 8<sup>th</sup>, at 6:30pm.

We had an amazing year; we were able to not only serve our community through our ESL classes, but also able to share the love and good news of Christ in many ways during the year.

Thanks be to God and to all the great volunteers that make ESL ministry possible.

**Classes will resume next fall.** If you have any questions about this ministry or you are interested in serving next semester, please let us know. Please keep in mind to be a volunteer you don't need to speak Spanish, and you don't need to be there every Wednesday. There are plenty of opportunities to serve in this ministry. If you'd like to learn more about our ESL program, please contact our ESL coordinator, Dawn Stacy at, [dawnstacy\\_gls@yahoo.com](mailto:dawnstacy_gls@yahoo.com).



## Spanish Worship Service!

We're blessed to continue with our Spanish worship services. We are still a small group, but we're continuing to grow in numbers. We enjoy our time together AND we also intentionally learn more about each member. As always, God is doing awesome things among us!

If you know anyone who speaks Spanish and doesn't have a home church, please let them know about our Spanish worship service and all of our other Spanish ministry opportunities held here in our church.

## Soccer Camp 2024!

We are excited and looking forward to having our soccer camp this year.

**JUNE 10-14 FROM 6:30PM-8:00PM**

If you would like to help us on a mission and serve our community, or for any other questions, please contact Pastor Juan at [jzamora@grace.lc](mailto:jzamora@grace.lc).



Interested in playing for or in helping with an adult soccer team?

We're looking for players. Please contact Pastor Juan at [jzamora@grace.lc](mailto:jzamora@grace.lc) ASAP, if you are interested. Our first game is May 11 at 5:00pm against Our Redeemer!

## Loving Liberia

I have come to know Chinka through Pat Fick, Coordinator of Student Ministries at Concordia Lutheran University, Austin, TX. Below is an article from Chinka.

*"My name is Chinka W. Kpue from Monrovia, Liberia, west Africa; I was born July 2, 1994. I grew up with my single parent, my mother in the harsh face of poverty, something that led me to picking up daily hire jobs (hard labor jobs) and breaking rocks (without machine) to earn a meager income, sleeping on a cup of water without food and working for community dwellers to eat. Despite of all the hardship, I am single and a student at Cuttington University where am currently studying Accounting and will be graduating June 15, 2024 with a Bachelor of science degree."*



Chinka represents what we hope to achieve in Liberia by providing Christian education to students so they can help their family, their country, and expand the kingdom of Jesus Christ.

Blessings,

*Pastor Hildebrandt*



Telling the next  
**GENERATION**

**Received and  
committed to date:**

**\$353,327.94**

**Goal:**  
**\$368,000**

 = \$1,000



**LEARN A NEW  
INSTRUMENT!**

New Vine Music Lessons now  
available for guitar, voice,  
violin, and piano.

CONTACT US AT  
CHURCHOFFICE@GRACE.LC  
OR 817-274-1626





# Memorials And Honorariums

A **Memorial** is a monetary gift designated to a Grace Ministry, as a living memorial in memory of a loved one or a friend.

An **Honorarium** is a monetary gift designated to a Grace Ministry as a tribute honoring an achievement, celebration, or deed of a loved one or a friend.

With deep appreciation, we have accepted the following Memorial gifts as of March 24, 2024:

**BRILLE MINISTRY:** In memory of *Wayne Hankins* given by Karen Bornsen, Ruth Brown, JoAnn Jeske, Tommy & Delores Smith.  
In memory of *Pat Madison* given by Ruth Brown.

**ESL MINISTRY** (English As Second Language): In memory of *Gerald Weisenfels* given by Ruth Brown

**GENREAL MINISTRY:** In memory of *Wayne Hankins* given by James & Barbara Durham, Everett & Debbie Treat Family, Lynn & Patty Smith, Charlene Wylie Family.

**HOLY SMOKERS:** In memory of *Wayne Hankins* given by Marty & Lucy Schlotte.

**SANCTUARY RENOVATION:** In memory of *Wayne Hankins* given by Lou Ann Kersten.  
In memory of *Pat Madison* given by Lou Ann Kersten.

## Braille Ministry: 2023 Accomplishments



# 2,430

Number of People Worldwide Your Center Reached in 2023

## \$4,822

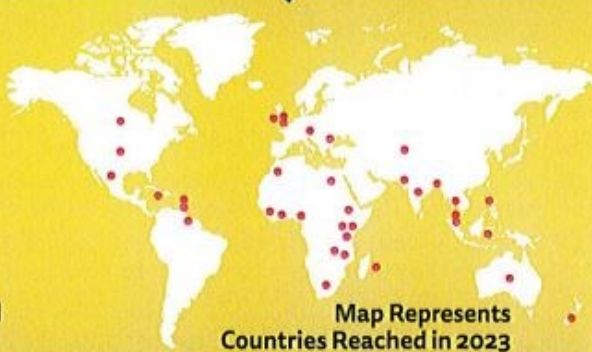
Cost of Supplies for Producing the Total Number of Volumes

## \$183,053

Labor Cost Saved

## \$8,905

Estimated Shipping Cost Saved



Map Represents Countries Reached in 2023

The mission of Lutheran Braille Workers is to freely share the Gospel with all who are Blind and Visually Impaired, and we can only fulfill this mission with the support of every volunteer and church in our network of **3,200 volunteers and 103 Ministry Centers!** "So shall My word be that goes out from my mouth; it shall not return to me empty, but it shall accomplish that which I purpose, and shall succeed in the thing for which I sent it." Isaiah 55:11 (ESV)

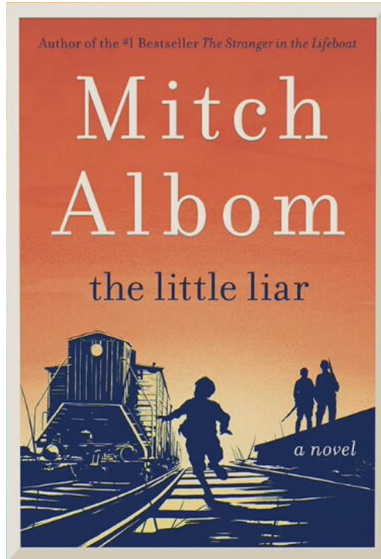
A Total of 36 Countries Were Reached in 2023

Country	Volumes Shipped*	2024 Ministry Goal*
AUSTRALIA		
BANGLADESH	129	142
CANADA	9	10
CZECH REP		
EGYPT		
ENGLAND		
ETHIOPIA		
GHANA		
GUYANA		
INDIA	45	50
INDONESIA		
IRELAND		
JAMAICA		
KAZAKHSTAN		
KENYA	15	17
MALAWI	21	23
MALAYSIA		
MAURITIUS		
MEXICO		
MOROCCO		
NEW ZEALAND	1	1
NIGERIA	49	54
PAKISTAN		
PHILIPPINES		
ROMANIA		
SAINT LUCIA		
SIERRA LEON		
SINGAPORE		
SOUTH AFRICA		
TANZANIA	2	2
THAILAND		
TRINIDAD & TABAGO		
UGANDA		
UNITED KINGDOM		
UNITED STATES	198	218
ZAMBIA	17	19
<b>Totals</b>	<b>486</b>	<b>536</b>

\*As of October 31, 2023

## Book Club

This month, we are reading "The Little Liar", by Mitch Albom. It is a timeless story about the power of love to ultimately redeem us, no matter how deeply we blame ourselves for our mistakes.



**Come join us!** We meet in the church library on the 3rd Wednesday of the month, at 2PM.

## Community Resources

Books on Wheels is a *FREE SERVICE* for homebound individuals and participating senior housing facilities. Volunteers or library staff deliver library materials to participants to borrow. Individuals have the choice to request items or have items selected for them.

**ARLINGTON PUBLIC LIBRARY**  
**HOMEBOUND DELIVERY SERVICE**

Books on Wheels is now serving homebound patrons! To learn more, visit [arlingtonlibrary.org/accessibility](http://arlingtonlibrary.org/accessibility)

**SCAN HERE**

**HAVE QUESTIONS? CONTACT US!**

**BY PHONE**  
817-459-6399

**BY EMAIL**  
[booksonwheels@arlingtontx.gov](mailto:booksonwheels@arlingtontx.gov)

Funded by the U.S. Institute of Museum and Library Services through a grant to the Texas State Library and Archives Commission (Grant # LS-25488-OLS-22).

**ARE YOU ELIGIBLE?** Individuals who are confined to their homes due to limited mobility, disability, or some other reason, as well as residents of participating residential facilities, may use APL's Books on Wheels service.

## Pushpay Instructions

1. Use your cell phone text messaging feature.
2. Type (833) 630-9900 in the send to line
3. Type GRACELC in the message line.
4. Press to send message.  
*Almost immediately you will receive a message back thanking you for your generosity.*
5. Click the link shown in the message.
6. This takes you to the page where you will see our church logo.
7. You have the option to make a gift to the church's ministries.
8. You can insert the dollar amount of the gift.
9. You can choose the frequency of the gift (one-time gift or recurring gifts).
10. Choose the fund type (tithes, etc.).
11. Click Next.
12. You will be able to confirm the details you just chose, then add your credit card or bank account information, and it can be stored for you or not, as you desire.
13. Check the box to authorize the transaction.
14. Press GIVE, and you are done.







# CELEBRATING FATHER'S DAY

## THE HOLY SMOKERS ARE SMOKING AGAIN!

The Holy Smokers are smoking St. Louis Style Spareribs, pork loins, & sausage (mild 14 oz. or spicy 12 oz.) on **Saturday, June 15th.**

**ORDER DEADLINE: June 9th at 12PM**

Make checks out to **Grace Lutheran Church:**  
*(memo to) Holy Smokers.*



**RIBS (whole slab)..... \$35**

**HALF PORK LOIN..... \$20**

**WHOLE PORK LOIN..... \$40**

**SAUSAGE (mild or spicy):**

**\$8 per ring**

**\$15 for 2 rings**

### HOW TO PLACE YOUR ORDER:

- Sign-up sheet in the Narthex
- Call *Brian Rukavina* (817-229-9703)
- Call *Ernie Owens* (817-247-0747)

Pickup time is around 2:00PM on Saturday, June 15th.  
We will call Saturday with updated pick-up time.

## The Chosen & Chat IS BACK! (TICKET ON PAGE 11 OF THE NEWSLETTER)



We are again gathering to fellowship and watch through some of this wonderful series together! **STARTING IN JUNE**, we will meet weekly on Wednesdays at 7 pm, starting in Meeting Room 2. We will watch through all of Season 3 through June and July. You can always watch from home to catch up at [The Chosen website](#), or by using their app. There will be water and fresh popcorn provided. Feel free to bring your own snacks and drinks, as well, and invite a friend or family member! [Contact us](#) for more information, and learn more about the series by reading below or [visiting their website \(thechosen.tv\)](#).

*The Chosen* is a television drama series based on the life of Jesus of Nazareth. It is the first-ever multi-season series based on the true stories of the gospels of Jesus Christ, and has become the #1 most crowdfunded media project of all time. [Watch the official trailer here!](#)

*Find your free ticket in the BACK of this newsletter! (on pg. 11)*



grace  
LUTHERAN CHURCH  
belong · believe · become

# SOCCER FOR ADULTS

Everyone is invited to have a fun time and participate with us in our adult soccer game.

We will be located on the soccer field!

**SATURDAY MAY 11  
AT 5 PM.**

**Contacts**

(817) 274-1626 English  
(817) 554-4125 Spanish  
jzamora@grace.lc

**Location**

210 W. Park Row Dr.  
Arlington, Tx 76010

Call 817.274.1626 or email [churchoffice@grace.lc](mailto:churchoffice@grace.lc) to:

- ◇ Receive a copy of *Portals of Prayer* mailed to your home.
- ◇ Be added to the group email list that receives prayer requests.
- ◇ Submit an updated address and/or contact information.
- ◇ Receive a current Church Directory as an active Grace member.
- ◇ Submit and/or update a prayer request.

**DONATE TODAY  
DONATE TODAY  
DONATE TODAY  
DONATE TODAY**



We are collecting **NEW & GENTLY USED** eclipse glasses and sending them to Mexico, for the eclipse that will take place in August. Your donation will provide the opportunity for children to experience this once in a lifetime phenomenon!

**You can drop your glasses off OUTSIDE OF THE GYM. We will be collecting glasses until May 31st.**

## Spanish Corner

Espíritu Santo	Holy Spirit
Dios	God
Feliz	Happy
Orar	Pray
Mayo	May
Gloria	Glory
Gracia	Grace
Paz	Peace
Alegría	Joy



## Save the Date

- ◇ National Day of Prayer, *May 2nd*
- ◇ Cinco De Mayo, *May 5th*
- ◇ National Teacher Appreciation Day, *May 7th*
- ◇ Ascension of Jesus, *May 9th*
- ◇ Mother's Day, *May 12th*
- ◇ Day of Pentecost, *May 19th*
- ◇ Memorial Day, *May 27th*



- 5/1 Max Blaine Nieves
- 5/1 Jordan Mangrum Scoggins
- 5/1 Reecanne Joeckel
- 5/1 Andy Van Hecker
- 5/2 Susan Hamann
- 5/3 Miranda Wagoner
- 5/4 Dorene Goodson
- 5/4 Hayden Brown
- 5/8 Thomas Jones
- 5/12 Olena Gerhardt
- 5/13 Karen Bornsen
- 5/14 Sandra Pecard
- 5/14 Scott Cunningham
- 5/15 Eric Rathjen
- 5/16 Cynthia Walker
- 5/17 Dawn Sepulveda
- 5/18 Diane Itgen
- 5/22 Brendan Terry
- 5/23 Uvonne Dupstadt
- 5/24 Ann Reynolds
- 5/26 Sherry Burgdorf
- 5/26 James Gerhardt
- 5/27 Desiree Minor
- 5/27 Ellen Pelzer
- 5/28 Joe Masterson
- 5/28 Kristin Braziel
- 5/30 Cassie Winland
- 5/30 Red Hoar
- 5/30 Melonnie Pollard
- 5/30 Robert Smith
- 5/31 Makena Reynolds

## Faith And Eternal Hope

As we observe Memorial Day, we pause to honor the brave men and women who made the ultimate sacrifice in service to their country. Their selflessness reminds us of the profound depth of love and devotion, echoing the sacrificial nature of Christ's own journey. In this time of reflection, we find comfort in our faith, knowing that through Christ, death is not the end, but a gateway to eternal life.

Memorial Day serves as a poignant reminder of the brevity of life and the importance of cherishing each moment. Yet, amidst the somber reflections, we find hope in the promise of eternity. Through faith, we cling to the belief that those who have passed on are now in the presence of God, experiencing a joy and peace beyond our comprehension.

As we gather with loved ones on this day, let us not only remember the fallen, but also recommit ourselves to lives of service and sacrifice. Inspired by the courage of our heroes, may we strive to live with purpose and honor, knowing that our actions today shape the legacy we leave behind.

## Your Elders Are Here for You

If there is any way we can assist you with any spiritual needs or physical concerns, do not hesitate to contact your elder. If you need their contact information, please request it by calling the church at 817-274-1626 or email: [jdelcristo@grace.lc](mailto:jdelcristo@grace.lc).

New to Grace? Reference the adjacent list. If your last name begins with "D," for example, Hank Jacobs would be your assigned elder.

*Joseph C. Masterson*

### ELDERS & THEIR ASSIGNED MEMBERS

Ernie Owens	A-B
Hank Jacobs	C-E
David Swille	F-H
Mike Kennedy	I-L
Mike Curtis	M-O
Ernie Owens	P-R
Joe Masterson	S
Jim Schmidt	T-Z

Head Elder:  
Joe Masterson

## MAY Birthdays & Anniversaries

- 5/4 Steven & Lisa Woolston
- 5/11 Daniel & Nancy Helm
- 5/11 Greg & Gail Roe
- 5/16 Ken & Amy Homeyer
- 5/21 Tom & Rae Ann Wagoner
- 5/22 Michael & Na Schmidt
- 5/26 Doug & Karen Widger
- 5/29 Scott & Cynthia Cunningham
- 5/30 Richard & Paula Crossman



# Spring Word Search

C H I C K E J U N E G R W O W  
H P U D D L E M A P R I L H S  
I B L O H B U N N Y E B O M E  
B A S E B A L L T T E U M A E  
S U M A M A T C H A N T F R D  
H O T S P R I C I N G T L C S  
N E S T T A P I H E A F O H O  
E G S G E T R A I N B O W L R  
E G S S Y R E W S O L Y E E A  
A S E H B U F N N S O L R S I  
E G R O W O F L L Y O Y S S N  
A N U W E F M A Y Y M V R O C  
S A N E R A N B O W S H E S O  
U M B R E L L A E A S T E R A  
T H A S P R I N G P U D D E T



APRIL  
BASEBALL  
BLOOM  
BUNNY  
BUTTERFLY  
CHICK  
EASTER  
EGGS

FLOWERS  
GREEN  
GROW  
HATCH  
JUNE  
MARCH  
MAY  
NEST

PASSOVER  
PUDDLE  
RAINBOW  
RAINCOAT  
SEEDS  
SHOWERS  
SPRING  
UMBRELLA





A SERIES BASED ON THE THE TRUE  
STORIES OF THE GOSPELS OF JESUS

# The CHOSEN

WATCH SEASON 3 WITH US WEDNESDAYS STARTING JUNE 5TH | 7PM

## THE CHOSEN & CHAT

ROOM	MR2
DAY	WED
TIME	7PM
START	6/5

Grace Lutheran Church  
210 W Park Row Dr  
Arlington, TX 76010

grace.lc · 817-274-1626

A SERIES BASED ON THE THE TRUE  
STORIES OF THE GOSPELS OF JESUS

# The CHOSEN

WATCH SEASON 3 WITH US WEDNESDAYS STARTING JUNE 5TH | 7PM

## THE CHOSEN & CHAT

ROOM	MR2
DAY	WED
TIME	7PM
START	6/5

Grace Lutheran Church  
210 W Park Row Dr  
Arlington, TX 76010

grace.lc · 817-274-1626

A SERIES BASED ON THE THE TRUE  
STORIES OF THE GOSPELS OF JESUS

# The CHOSEN

WATCH SEASON 3 WITH US WEDNESDAYS STARTING JUNE 5TH | 7PM

## THE CHOSEN & CHAT

ROOM	MR2
DAY	WED
TIME	7PM
START	6/5

Grace Lutheran Church  
210 W Park Row Dr  
Arlington, TX 76010

grace.lc · 817-274-1626

A SERIES BASED ON THE THE TRUE  
STORIES OF THE GOSPELS OF JESUS

# The CHOSEN

WATCH SEASON 3 WITH US WEDNESDAYS STARTING JUNE 5TH | 7PM

## THE CHOSEN & CHAT

ROOM	MR2
DAY	WED
TIME	7PM
START	6/5

Grace Lutheran Church  
210 W Park Row Dr  
Arlington, TX 76010

grace.lc · 817-274-1626

## COME AND SEE

A charismatic fisherman drowning in debt. A troubled woman wrestling with real demons. A kind, gifted young man ostracised by his family and his people for working as a publican. See how Jesus reaches each of these and more as He works His first miracles and embarks on His ministry to change the world.

### THE CHOSEN & CHAT

Water and fresh popcorn provided.

Feel free to bring your own snacks and drinks as well!

A short discussion + fellowship time will follow our viewing each week.

## COME AND SEE

A charismatic fisherman drowning in debt. A troubled woman wrestling with real demons. A kind, gifted young man ostracised by his family and his people for working as a publican. See how Jesus reaches each of these and more as He works His first miracles and embarks on His ministry to change the world.

### THE CHOSEN & CHAT

Water and fresh popcorn provided.

Feel free to bring your own snacks and drinks as well!

A short discussion + fellowship time will follow our viewing each week.

## COME AND SEE

A charismatic fisherman drowning in debt. A troubled woman wrestling with real demons. A kind, gifted young man ostracised by his family and his people for working as a publican. See how Jesus reaches each of these and more as He works His first miracles and embarks on His ministry to change the world.

### THE CHOSEN & CHAT

Water and fresh popcorn provided.

Feel free to bring your own snacks and drinks as well!

A short discussion + fellowship time will follow our viewing each week.

## COME AND SEE

A charismatic fisherman drowning in debt. A troubled woman wrestling with real demons. A kind, gifted young man ostracised by his family and his people for working as a publican. See how Jesus reaches each of these and more as He works His first miracles and embarks on His ministry to change the world.

### THE CHOSEN & CHAT

Water and fresh popcorn provided.

Feel free to bring your own snacks and drinks as well!

A short discussion + fellowship time will follow our viewing each week.